

We're Expecting You!

We're excited to help you welcome your new little one into the world.

When You Arrive

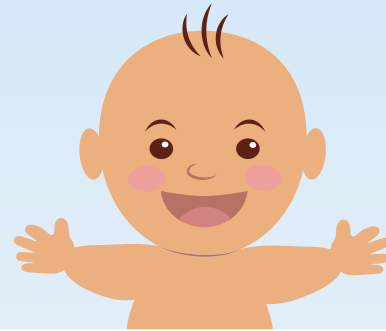
Check in at Inpatient Admitting: 1st Floor, Pavilion Lobby, 7 a.m.-9 p.m., Monday-Friday
On Saturday, Sunday and weekday nights after 9 p.m., please check in at the Emergency Room.

In the Bag

Here's what you'll need before and after delivery. We recommend having everything ready to go by the time you're eight months pregnant.

For You

- Bathrobe, nightgowns, slippers and socks
- Bras (nursing or regular)
- Breast pump (to learn how to use it properly before discharged)
- Camera (with extra batteries and a charger)
- Cell phone and charger
- Comfortable shoes to wear home
- Contacts and eyeglasses, if you wear them
- Contact information for family and friends
- Driver's license (or other picture ID), insurance card, hospital paperwork
- Going-home outfit (something that fit when you were 4-5 months pregnant)
- Makeup
- Maternity underpants (several pairs)
- Pillows
- Sanitary pads
- Snacks
- Something to read or watch
- Toiletries (shampoo, toothpaste, toothbrush, lip balm, deodorant, comb and brush)



For Baby

- Car seat
- Diapers
- Going-home outfit
- Heavier blanket, depending on the weather
- Receiving blanket
- Sweater and cap, depending on the weather



North
Kansas City
Hospital

WOMEN'S
— CENTER —